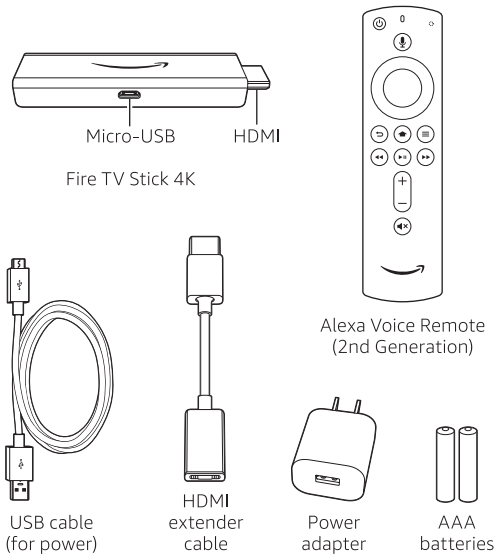


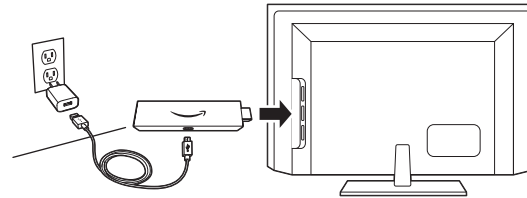
What's in the box



1. Connect your Amazon Fire TV Stick 4K

Connect one end of the USB cable into your Amazon Fire TV Stick 4K and the other end into the power adapter. Plug your Fire TV Stick 4K into the HDMI port on your TV, then plug the power adapter into a nearby outlet. Turn on your TV, then select the appropriate HDMI input.

For 4K streaming, connect the Fire TV Stick 4K to an HDMI HDCP 2.2 port on your 4K TV.

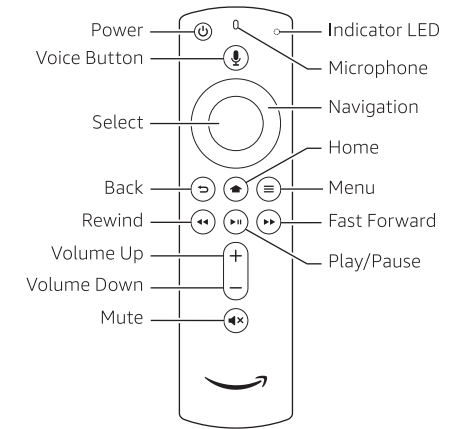


Use the included HDMI extender to improve Wi-Fi and remote performance, or if you have trouble fitting your Fire TV Stick 4K into an HDMI port on your TV.



2. Power up your Alexa Voice Remote

1. Open the back of the remote and insert the included batteries.
2. After pairing your Alexa Voice Remote, follow the on-screen instructions to control the power and volume of your TV.



3. Complete the on-screen setup

Using your Alexa Voice Remote, follow the on-screen instructions.

- Choose your language from the list.
- Select your Wi-Fi network from the networks displayed on the screen.

Note: If your Wi-Fi network is password protected, have your Wi-Fi network password handy to connect your Fire TV Stick 4K to the Internet. If your network is hidden, select the "Join Other Network" tile from the list. If required, enter your network password using the on-screen keyboard.

Registering your Fire TV Stick 4K

If you purchased your Fire TV Stick 4K online from Amazon.com using your Amazon account, it is already registered to you. If you received your Fire TV Stick 4K as a gift or it is not yet registered, please follow the on-screen instructions to register your device.

Tips and troubleshooting

Wi-Fi

- Use the 5GHz band on your wireless router if available for best Wi-Fi performance.
- If you see a lock icon, your Wi-Fi network requires a password, so make sure you have it available.
- If you need help finding your Wi-Fi password, go to www.amazon.com/wifi.
- Ensure your Internet is working properly. Restarting your router and modem will solve most Wi-Fi network issues.
- Do not place your wireless router or Amazon Fire TV Stick 4K in a cabinet, as it may impact Wi-Fi signal strength.
- Some Wi-Fi issues may be improved by connecting the included HDMI extender.

Remote pairing

Having trouble with your remote? First, remove and reinsert the batteries in your remote. The remote should automatically pair with your device. If your remote isn't discovered, press and hold the Home button until the LED starts to rapidly flash amber.

For more troubleshooting and information, go to www.amazon.com/devicesupport

Get the most out of your Fire TV Stick 4K

About your Alexa Voice Remote

Simply press and hold the Voice button and speak. You can search for movies, TV shows, actors, and directors. Just say "Launch Netflix" to launch the Netflix app or "Play Tom Clancy's Jack Ryan."

Try saying "Show me sports scores," "What movies are playing nearby tonight?" or "What's the weather?" To learn more about Alexa, visit www.amazon.com/help/firetv/alexa.

Even better with Amazon Prime

Amazon Prime members get unlimited access to thousands of movies and TV episodes with Prime Video, including award-winning originals. Get millions of songs with Prime Music and unlimited photo storage in Amazon Drive. Easily access Prime content from your Home screen.

Content you love

Prime members can add subscriptions to Showtime and STARZ even without cable. To add other popular apps like Netflix, Hulu, HBO Now, WatchESPN, and thousands more, go to the Apps tab or use your voice to search.